

Time Management G-Echo Software Installation

<http://venturegps.com>

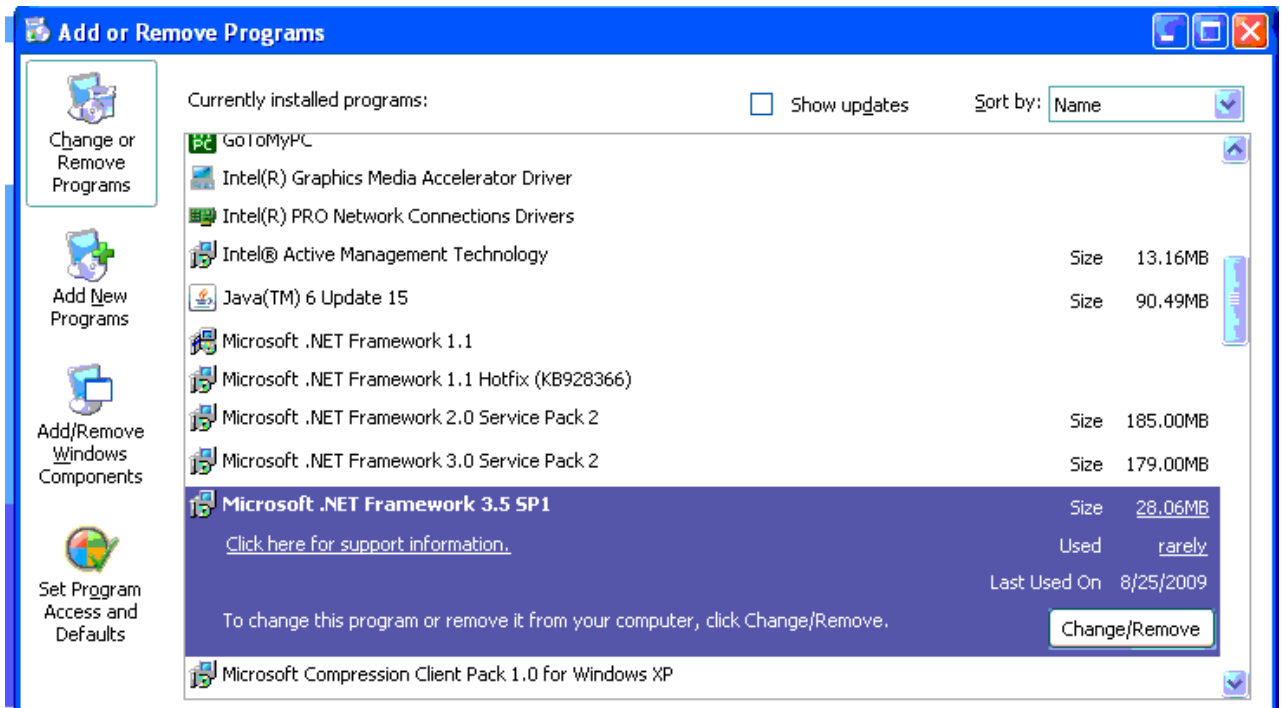
v1.0.35
05/03/2010

Pre Install Checklist

- Computer with one of the following Operating Systems
 - Windows XP, Service Pack 3
 - Windows Vista
 - Windows 7
- High Speed Internet Connection

Pre Install Steps

1. Verify your specific operating system version and specific service pack version. This is **VERY IMPORTANT** if you are Windows XP you must upgrade to Service Pack 3 if you have not already done so. The software will not work on Service Pack 2 and lower.
2. Verify that you already have installed Microsoft .NET Framework 3.5 or higher
Go to Start > Control Panel > Add or Remove Programs



If you do not have Framework 3.5 or higher in the list then you can install it from the CD.
It is the file called Framework3.5.exe
Run this file **FIRST** before you install the rest of the software.

Software Installation

1. Install Microsoft SQL Database (MSDE). It is the file called Step1.exe
2. Restart the computer
3. Install database code. It is the file called Step2.exe This will launch a black DOS window.

If you didn't see a bunch of numbers run by on the DOS window then there is a database issue. Do not proceed to the next step. If you have a tech person on staff then verify that there is an instance of SQL Server created called GEcho and that its Windows Service is started; otherwise call Time Management.

4. Install the application. It is the file called Step3.exe

Hardware Install

1. Plug the office unit into a power outlet and then into a USB port on the computer. There are no needed driver software for this hardware.

First Time Running Application

- The application is called TMI G-Echo. On the first run there will be an initial setup window.
- On the first step you will enter your username and password for venturegps.com and click the button.
- The second step is for if you already have Vehicle Groups setup on your account that you will use as branches, if you have different office locations. For most installs you can skip this and just click the button.
- The 3rd step is for if you have G4 Echo units in your fleet. If you do, then enter your pincode. If you do not, then check the checkbox that says you do not have G4. Then click the button.
- The last step is for G5 or newer units. If you do not have G5 units then check the box, otherwise just click the button.
- Now the program will open up. The first thing you must do is configure units.

Time Zone Step

- If you are NOT in Eastern Time Zone then you have some extra steps because the webserver defaults vehicles to Eastern Time.
- Configure your units to get them into the program list (as explained in the next section)
- Hit the Upload button to sync these units to the server
- Log into venturegps.com, go to Manage > Vehicles, and edit the time zone setting for each vehicle
- Now that your timezones are set correctly, you may download vehicle data by turning Auto-Download On, in the G-Echo program

Configuring Units

- For G5 units, click the Configure G5s button. This will put the program in configure mode. It will continually scan for nearby units. When it finds one it will pair up with it and the status messages in the log window above will change from saying “0 units added” to “1 unit added” “2 units added”, etc.
- When you have found all of your units, click the Stop Configure button.
- You should now see these new units in the list.

Naming Vehicles

- Vehicle naming is done via the website, venturegps.com
- After you name the vehicles online, your changes will sync back down to your computer in a few minutes.

Downloading and Uploading

- The normal operation is to set the program’s Auto Download mode to On.
- When running, the program will constantly go through the list of vehicles and 1 at a time, try to communicate with each vehicle and download its data.
- The upload process is constantly running in the background. Every 5 minutes it will begin uploading to the website whatever data is available.

Edit Parameters

- If you want to edit vehicle settings such as enabling breadcrumb data, highlight the vehicle in the list.
- Click the Edit Vehicle button
- Click the Load Values From Unit button. This will talk to the unit and report current values.
- Make your changes and then click Save